

TOOLS & EQUIPMENT

CATALOGUE

INDUSTRI

TOOLS & EQUIPMENT



'Let's Get To Work!'



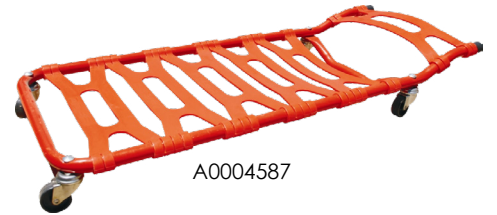
Hydraulic Pipe Benders

Stock Code	System Code	Size	Former	Uom	Brand
GQ0010	A0007827	1/2-2"/6	6	EA	Mobi-Jack
GQ0020	A0007828	1/2-3"/8	8	EA	Mobi-Jack



4 Wheel Creepers

Stock Code	System Code	Uom	Brand
BL0100	A0004587	EA	Bosal



Filter Strap Removals

Stock Code	System Code	Size	Type	Uom	Brand
SP0025	A0014153	150 mm	Chain	EA	Sykes-Pickavant
SP0020	A0014152	300 mm	Strap	EA	Sykes-Pickavant



Tyre Pressure Gauges

Stock Code	System Code	Type	Uom	Brand
SP0505	A0014157	Dial	EA	Sykes-Pickavant



Tyre Inflator Gauges

Stock Code	System Code	Uom	Brand
MS0425	A0010367	EA	PCL



Pneumatic Jack Hydras

Stock Code	System Code	Capacity	Uom	Brand
GQ0240	A0007850	20 Ton	EA	Mobi-Jack
GQ0250	A0007851	30 Ton	EA	Mobi-Jack
GQ0260	A0007852	50 Ton	EA	Mobi-Jack



Pallet Jacks

Stock Code	System Code	Size	Capacity	Uom	Brand
GQ0270	A0007853	385 x 1220 mm	2.5 Ton	EA	Mobi





Bottle Jacks				
Stock Code	System Code	Capacity	Uom	Brand
GQ0100	A0007835	2 Ton	EA	Mobi-Jack
GQ0110	A0007836	2 Ton, 2 Stage	EA	Mobi-Jack
GQ0120	A0007837	3 Ton	EA	Mobi-Jack
GQ0130	A0007838	5 Ton	EA	Mobi-Jack
GQ0140	A0007839	8 Ton	EA	Mobi-Jack
GQ0150	A0007840	12 Ton	EA	Mobi-Jack
GQ0160	A0007841	12 Ton, Short	EA	Mobi-Jack
GQ0170	A0007842	15 Ton	EA	Mobi-Jack
GQ0180	A0007843	20 Ton	EA	Mobi-Jack
GQ0190	A0007844	20 Ton, Short	EA	Mobi-Jack
GQ0200	A0007845	30 Ton	EA	Mobi-Jack
GQ0210	A0007846	50 Ton	EA	Mobi-Jack
GQ0220	A0007847	100 Ton	EA	Mobi-Jack



A0007835



A0007842

Hi-Lift/Farmers Jacks				
Stock Code	System Code	Size	Uom	Brand
GQ0230	A0007848	1500 mm	EA	Mobi-Jack



A0007848

Trolley Jacks					
Stock Code	System Code	Type	Capacity	Uom	Brand
GQ0310	A0007860	Aluminium, Racing	1.5 Ton	EA	Mobi-Jack
GQ0320	A0037510	Hydraulic	2.5 Ton	EA	Mobi-Jack
GQ0330	A0007862	Hi-Lift	2 Ton	EA	Mobi-Jack
GQ0340	A0037511	Long Body	3 Ton	EA	Mobi-Jack
GQ0350	A0007863	Short Body	3 Ton	EA	Mobi-Jack
GQ0360	A0007865	Long Body	5 Ton	EA	Mobi-Jack
GQ0370	A0007866	Long Body	5 Ton	EA	Mobi-Jack
GQ0380	A0007867	Hydraulic	12 Ton	EA	Mobi-Jack
GQ0390	A0007868	Hydraulic	20 Ton	EA	Mobi-Jack



A0007867



A0037510



A0007858

Transmission Jacks					
Stock Code	System Code	Type	Capacity	Uom	Brand
GQ0290	A0007858	Floor Style	1 Ton	EA	Mobi-Jack
GQ0280	A0007856	Floor Style	1.5 Ton	EA	Mobi-Jack
GQ0300	A0007859	Pit Style	1 Ton	EA	Mobi-Jack



A0007859

Engine Cranes				
Stock Code	System Code	Capacity	Uom	Brand
GQ0080	A0007833	1 Ton	EA	Mobi-Jack
GQ0070	A0007832	2 Ton	EA	Mobi-Jack



A0007833



3 Piece Honing Stone Cylinder Sets

Stock Code	System Code	Grit	Uom	Brand
SP0546	A0014160	220	Set	Sykes-Pickavant



A0014160

Engine Stand

Stock Code	System Code	Size	Uom	Brand
GQ0090	A0007834	750 LB	EA	Mobi-Jack

A0007834



Tyre Levers

Stock Code	System Code	Size	No.	Uom	Brand
GD2560	A0007329	400 mm	38	EA	Gedore
GD2561	A0007330	500 mm	38	EA	Gedore
GD2562	A0007331	610 mm	39	EA	Gedore



A0007329



A0007331

Test Lights

Stock Code	System Code	Size	Uom	Brand
RA0085	A0011881	6/24V	EA	Raco



A0011881

Body Frame Repair Kits

Stock Code	System Code	Capacity	Uom	Brand
GQ0030	A0007829	4 Ton	EA	Mobi-Jack
GQ0040	A0007831	10 Ton	EA	Mobi-Jack
GQ0050	A0007831	10 Ton	EA	Mobi-Jack



A0007829

Hydraulic Presses

Stock Code	System Code	Capacity	Type	Uom	Brand
GQ0400	A0037512	12 Ton	Hand Pump	EA	Mobi-Jack
GQ0410	A0007869	20 Ton	Bottle Jack	EA	Mobi-Jack
GQ0420	A0007870	25 Ton	Hand Pump	EA	Mobi-Jack
GQ0430	A0007871	50 Ton	Hand Pump	EA	Mobi-Jack



A0007869



A0007546



A0007544

Puller Kits						
Stock Code	System Code	Contents	Set	Type	Uom	Brand
GD4659	A0007546	2 x 2-Arm Heads, 2 x 3-Arm Heads 3 x Pulling Hooks - 210 mm 3 x Pulling Hooks - 260 mm 3 x Pulling Hooks - 390 mm 2 x Hydraulic Pressure Spindle	8 Piece	Construction Machine Kit	Kit	Gedore
GD4657	A0007544	2 x Arm Cross Pieces - 260 mm 3 x Arm Cross Pieces - 260 mm 3 x Pulling Hooks - 100 mm 3 x Pulling Hooks - 300 mm 3 x Slim Pattern Pulling Hooks - 220 mm Hydraulic Pressure Spindle Bearing Separator	9 Piece	Puller Kit, Truck Workshop	Kit	Gedore

Triple Grip Pullers						
Stock Code	System Code	Size	No.	Uom	Brand	
GD4545	A0007523	55 x 60 mm	8563-01	EA	Gedore	
GD4590	A0007534	80 x 150 mm	8569-1	EA	Gedore	
GD4561	A0007528	140 x 160 mm	8565-3	EA	Gedore	
GD4591	A0007535	140 x 200 mm	8569-2	EA	Gedore	
GD4562	A0007529	200 x 220 mm	8565-4	EA	Gedore	
GD4580	A0007531	400 x 350 mm	8567-1	EA	Gedore	



A0007523

Twin Grip Pullers						
Stock Code	System Code	Size	No.	Uom	Brand	
GD4535	A0007521	50 x 60 mm	8562-1	EA	Gedore	
GD4536	A0007522	70 x 70 mm	8562-2	EA	Gedore	
GD4560	A0007527	80 x 120 mm	8565-2	EA	Gedore	
GD4550	A0007524	100 x 110 mm	8564-2	EA	Gedore	
GD4585	A0007532	100 x 150 mm	8568-1	EA	Gedore	
GD4500	A0007516	105 x 110 mm	8220-10	EA	Gedore	
GD4551	A0007525	140 x 150 mm	8564-3	EA	Gedore	
GD4586	A0007533	140 x 200 mm	8568-2	EA	Gedore	
GD4501	A0007517	160 x 180 mm	8220-20	EA	Gedore	
GD4505	A0007520	200 x 110 mm	8220-30L	EA	Gedore	
GD4552	A0007526	200 x 200 mm	8564-4	EA	Gedore	
GD4502	A0007518	210 x 280 mm	8220-30	EA	Gedore	
GD4570	A0007530	300 x 300 mm	8566-1	EA	Gedore	



A0007522



A0007521



Mining Dolly Pusher

Stock Code	System Code	Shank	Uom	Brand
MS1280	A0010519	22 mm	EA	Brito



A0010519

Hydraulic Nut Splitter

Stock Code	System Code	Size	No	Uom	Brand
GD4630	A0007537	22 mm	1.26/1	EA	Gedore
GD4631	A0007538	32 mm	1.26/2	EA	Gedore



A0007537



A0000001



A0010435



A0010437



A0011875



A0010436

Spray Guns

Stock Code	System Code	Volume	Type	Uom	Brand
MS0910	A0010435	1 L	GFG-HC-C1-14 Gravity Feed	EA	Devilbiss
MS0920	A0010437	1 L	JGA-S-16 Spray Gun	EA	Devilbiss
MS0915	A0010436	500 ml	GFC-511 Gravity Feed, Kit, Cup	Kit	Devilbiss
RA0060	A0011875	600 ml	HON8050 Paraffin, 450 Nozzle	EA	Hon
HT0120	A0008163	1L	2-875 High Pressure Air-Operated	EA	Hit
RA0061	A0000001	1 Li	MTS4587 High Pressure, Rt17/320	EA	Raco



A00078



A0007878



A0007874



A0007877

Tressles

Stock Code	System Code	Type	Capacity	Uom	Brand
GQ0440	A0007872	Pin	3 Ton	EA	Mobi-Jack
GQ0450	A0007874	Pin	6 Ton	EA	Mobi-Jack
GQ0460	A0007876	Pin	12 Ton	EA	Mobi-Jack
GQ0470	A0007877	Pin	12 Ton	EA	Mobi-Jack
GQ0480	A0007878	Pin	20 Ton	EA	Mobi-Jack
GQ0490	A0007879	Rat Car/Van	3 Ton	EA	Mobi-Jack
GQ0510	A0007883	Rat Truck	6 Ton	EA	Mobi-Jack
GQ0500	A0007881	Rat Truck	12 Ton	EA	Mobi-Jack



A0012463



A0039183

550 g Tarpaulins

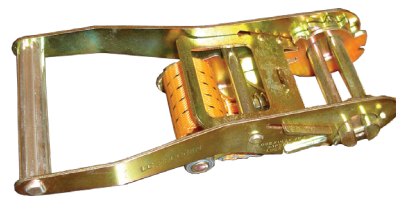
*Sizes can be custom made to any Specifications

Stock Code	System Code	Size	Type	Uom	Brand
SI0020	A0012463	2 x 3 m	PVC Tarpaulin, 550, g Blue/Green	EA	Industri
SI0021	A0012464	3 x 4 m	PVC Tarpaulin, 550, g Blue/Green	EA	Industri
SI0022	A0012465	4 x 5 m	PVC Tarpaulin, 550, g Blue/Green	EA	Industri
SI0023	A0012466	4 x 6 m	PVC Tarpaulin, 550, g Blue/Green	EA	Industri
SI0024	A0012467	5 x 6 m	PVC Tarpaulin, 550, g Blue/Green	EA	Industri
SI0025	A0039183	6 x 4 m	PVC Tarpaulin, 550, g Blue/Green	EA	Industri
SI0026	A0012469	6 x 6 m	PVC Tarpaulin, 550, g Blue/Green	EA	Industri
SI0027	A0012470	6 x 8 m	PVC Tarpaulin, 550, g Blue/Green	EA	Industri
SI0028	A0012471	9 x 8 m	PVC Tarpaulin, 550, g Blue/Green	EA	Industri
SI0029	A0012472	10 x 10 m	PVC Tarpaulin, 550, g Blue/Green	EA	Industri

(Also Available In 700 g & 800 g on Request)



A0012475



A0012477

Tie Downs & Ratchets for Tarps

Stock Code	System Code	Size	Type	Uom	Brand
SI0040	A0012475	50 mm	White Tie Down	EA	Cover King
SI0041	A0012476	50 mm	White Short Tail	EA	Cover King
SI0042	A0012477	50 mm	Ratchet Long	EA	Cover King
SI0043	A0012478	75 mm	White Tie Down	EA	Cover King
SI0044	A0012479	75 mm	White Short Tail	EA	Cover King
SI0045	A0012480	75 mm	Ratchet Long	EA	Cover King

TA 2 Jaw Bearing Pullers



A0027560

TA 3 Jaw Bearing Pullers



A0027561

System Code	Size	Height	Bearing Ø
A0027560	75 mm	90 mm	15-80
A0027549	100 mm	120 mm	20-110
A0027551	150 mm	180 mm	25-160
A0027553	200 mm	235 mm	30-210
A0027554	250 mm	290 mm	40-265
A0027555	300 mm	335 mm	50-317
A0027558	350 mm	400 mm	80-370

System Code	Size	Height	Bearing Ø
A0027561	75 mm	90 mm	15-80
A0027550	100 mm	120 mm	20-110
A0027552	150 mm	180 mm	25-160
A0027541	200 mm	235 mm	30-210
A0027542	250 mm	290 mm	40-265
A0027556	300 mm	335 mm	50-317
A0027559	350 mm	400 mm	80-420

TA Combination Internal & External Pullers



A0027544

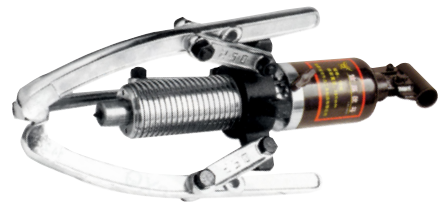


A0027544

System Code	Internal Range	External Range	No. of Jaws	No. of Pieces per Set
	mm	mm		
A0027544	15-80	15-80	3	4

TA Hydraulic Bearing Pullers

With a rotary pump handle & a spring draw back.

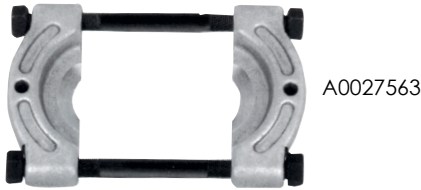


A0031646

System Code	Internal Range	External Range	No. of Jaws	No. of Pieces Per Set
	mm	mm		
A0031646	3 Ton	150	60	2 & 3
A0031647	5 Ton	200	60	2 & 3
A0031644	10 Ton	250	60	2 & 3
A0031645	20 Ton	350	60	2 & 3

NOTE : If a 2 jaw configuration is used, the rated load is reduced by 1/3.

TA Bearing Separators



A0027563

System Code	Size	Max. Spread	Min. Spread
	mm	mm	mm
A0027563	50	50	30
A0027564	75	75	50
A0027543	100	100	75
A0027562	150	150	80

TA Bearing Separator Kits



BS50/75

System Code	Size mm	Stock Code	Size mm	Stock Code	Size mm
BS50/75	50.75	BS100	100	BS150	150

TA Hydraulic Bearing Separator Kits



A0031648

System Code	Load Size	mm
A0031648	10 Ton	100
A0031649	12 Ton	150

TA Bearing Separators



A0027568

System Code	No. of Pieces	Hydraulic Ram	Separator	Puller
			mm	mm
A0027568	23	10 Ton	100	100, 150, 200

TA Nut Splitters

Drop- Forged Body, Carbon Steel, with a CRV blade



A0027569

System Code	For Nuts	Stock Code	For Nuts
	mm		mm
A0027569	9 - 12	NS 16 -13	16 - 22
A0027570	2 - 16	NS 19 24	19 - 24

TA Hydraulic Nut Splitters

Offset shape assists in confined spaces. Drop-forged body, steel, with CRV blade.



System Code	For Nuts	Stock Code	For Nuts
	mm		mm
HNS 7 - 22	7 - 22	HNS 22 - 36	22 - 36

TA Flat Hydraulic Cylinders

Low height for use in confined spaces. Single acting, spring return.



System Code	Capacity	Stroke	Min. Height	Cylinder	Piston
	Ton	mm	mm	Ø mm	Ø mm
A0031610	5	6	32	41	25.4
A0028961	10	12	42	55	38.1
A0031606	20	11	51	76	50.8
A0031607	30	13	58	95	63.4
A0031609	50	16	64	114	69.8

TA Short Hydraulic Cylinders

Lightweight, Low Profile



System Code	Capacity	Stroke	Min. Height	Cylinder	Piston
	Ton	mm	mm	Ø mm	Ø mm
A0031623	20	45	98	92	50.8
A0031624	30	62	117	101	66.5
A0031625	50	60	122	124	69.8
A0031622	100	57	141	165	92.2

ITA Long Hydraulic Cylinders

Single acting, heavy-duty spring return. Collars & pistons are drilled & tapped.

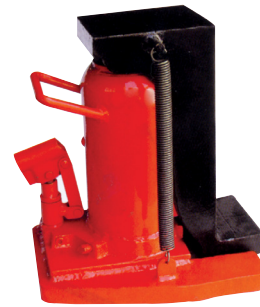


A0031595

System Code	Capacity	Stroke	Min. Height	Cylinder	Piston
	Ton	mm	mm	Ø mm	Ø mm
A0031595	10	156	247	57	38.1
A0031617	15	152	271	69	41.4
A0031618	25	158	273	85	57.2
A0031619	50	159	282	127	75.5

ITA Head & Toe Jacks

For Use on the repair, maintenance & installation of heavy machines. Lift toe spring return.



A0031613

System Code	Head Capacity	Toe Capacity	Min. Toe Height	Stroke	Jaw
	ton	Ton	mm	mm	mm
A0031613	20	10	28	152	123 x 60
A0031615	30	15	40	155	149 x 60

ITA Double Ram Hydraulic Cylinder

Single acting. Long stroke.



A0028890

System Code	Capacity	No. of Rams	Stroke	Min. Height	Cylinder
	ton		mm	mm	Ø mm
A0028890	10	2	270	250	110

ITA Hydraulic Bottle Jacks

With adjustable screw top & safety bypass valve.



A0031598



System Code	Max. Load	Min. Height	Max. Height	Screw Adjusting Height	Weight
	ton	mm	mm	mm	Kg
A0031598	2	181	116	48	2.9
A0031599	3	194	118	60	3.6
A0031600	5	216	127	70	4.8
A0031596	10	230	150	80	6.8
A0031597	20	242	150	60	11.5

ITA Hydraulic Toe Jacks

For Use on the repair, maintenance & installation of heavy machines. Revolve through 360°.



A0031658

System Code	Toe Capacity	Min. Toe	Stroke	Lift Range
	Ton		mm	mm
A0031658	5	25	250	25-230
A0031659	10	30	230	30-260

ITA Double Ram Bottle Jacks

With adjustable screw top & safety bypass valve.



A0031602



System Code	Max. Load	Min. Height	Max. Height	Screw Adjusting Height	Weight
	ton	mm	mm	mm	Kg
A0031602	2	150	160	60	4.7
A0031603	4	160	170	60	6.4
A0031604	6	215	270	100	8.9

ITA Support Jacks



A0027529

System Code	Max. Load	Min. Height	Max. Height	Lifting Height	Weight
	Ton	mm	mm	mm	Kg
A0027529	5	240	340	100	4.2
A0027526	10	292	453	160	7.1
A0027527	20	402	632	230	15.6

ITA Creeper



A0027507

System Code	Length	Width	Height	Max. Load
	mm	mm	mm	Kg
A0027507	930	500	140	150

ITA Hydraulic Hand Pumps

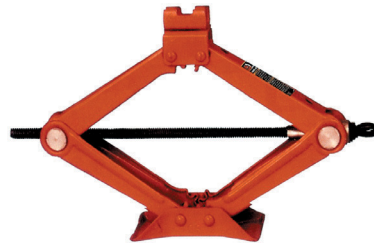
Two Speed. Supplied complete with hydraulic hose & couplers.



A0031636

System Code	Pressure Rating Bar	Oil Displacement/Stroke cm ³		Oil Capacity	
	LD	HP	LP	HP	cm ³
A0031636	13	700	12.5	2.3	700
A0031637	25	700	16.2	2.4	2200
A0031638	25	700	16.2	2.4	3000

ITA Scissor Jacks



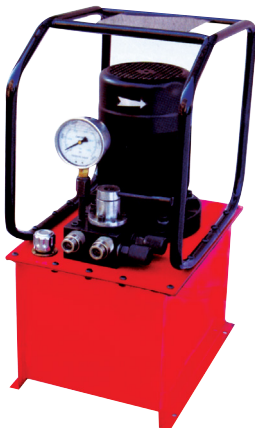
A0027520



System Code	Max. Load	Min. Height	Max. Height	Max. Length	Base Width	Weight
	Ton	mm	mm	mm	mm	Kg
A0027528	2	90	380	460	120	2.9

ITA Hydraulic Power Pack Pump

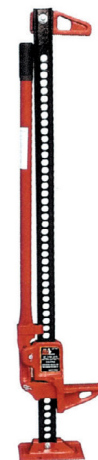
Supplied with hydraulic hose & couplers.



A0031643

System Code	Max. Working Load	Outlet at High Load	Tank Capacity	Motor	
				K	W
A0031643	70 Mpa	2 L/Min	30 L	1.5	2.2

ITA Hi-Lift Jacks



A0027520

System Code	Max Height	Min Height	Weight
	mm	mm	Kg
A0027520	1070	154	14

ITA Garage Jacks



B0001440



System Code	Max. Load	Min. Height	Max. Height	Overall length	Weight
	Kg	mm	mm		Kg
B0001440	3	145	520	695	39

ITA Foldable Engine Cranes



A0027540

System Code	Max. Load	Lifting Range	Max. Length	Max. Width	Max. Height	Weight
	Ton	mm	mm	mm	mm	Kg
A0027540	1	25-2000	1520	1100	1500	73

ITA Hydraulic Long Floor Jacks



A0027517

System Code	Max. Load	Min. Height	Max. Height	Overall length	Weight
	Ton	mm	mm		Kg
A0027517	2	140	800	1220	58
A0027519	3	130	600	1400	70
A0027510	5	150	560	1510	95
A0027515	10	160	560	1640	145

ITA Engine Cranes



A0027537

System Code	Max. Load	Lifting Range	Max. Length	Max. Width	Max. Height	Weight
	Ton	mm	mm	mm	mm	Kg
A0027537	0.75	0-2355	1805	840	1505	54
A0027538	1	55-2270	1560	935	1530	76
A0027536	2	380-2400	2310	1300	1575	73

ITA Pneumatic Long Floor Jacks



A0027522

System Code	Max. Load	Min. Height	Max. Height	Overall length	Weight
	Ton	mm	mm		Kg
A0027522	5	150	560	1510	100
A0027521	10	160	560	1640	140

ITA Engine Levelers



A0027513

System Code	Max. Load	Length	Weight
	Kg	mm	Kg
A0027513	680	400	5.5

LTA Bakkie Cranes



A0027512

System Code	Max. Load	Min. Height	Max. Height	Weight
	Ton	mm	mm	Kg
A0027512	500	870	1800	43

LTA Transmission Jacks



A0027530

System Code	Max. Load	Min. Height	Max Height	Weight
	Ton	mm	mm	Kg
A0027530	0.5	220	575	35.5
A0027532	1	210	775	68

LTA Telescopic Transmission Stands



System Code	Max. Load	Min. Height	Max. Height	Weight
	kg	mm	mm	Kg
A0027532	300	1100	1900	32
A0027533	500	1100	1900	32

LTA Hydraulic Rams



System Code	Max. Load	Min. Length	Max. Length	Ram Stroke	Weight
	Ton	mm	mm	mm	Kg
A0031581	3	620	1115	495	10.5
A0031582	5	625	1120	495	13.5
A0031583	8	630	1120	490	15

LTA Trestle Stands

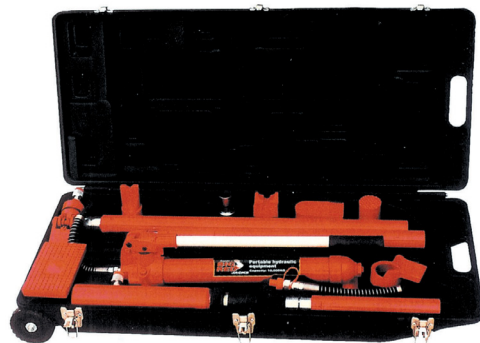


A0027511

System Code	Max. Load	Min. Height	Max Height	Lifting Height	Weight
	kg	mm	mm	mm	Kg
A0027511	3	300	430	130	2
A0027531	6	375	570	195	2.2

LTA Hydraulic Ram Kits

Includes hand pump, hose, cylindrical ram, spreader ram, rubber head. Rubber faced flat base, V-base, serrated saddle, thread adaptor & extensions.



A0031584

System Code	Max. Load	Min. Ram Length	Ram Stroke	Weight
	Ton	mm	mm	Kg
A0031584	10	470	150	31

ITA Ratchet Trestle Stands



A0027523



System Code	Max. Load	Min. Height	Max. Height	Lifting Height	Weight
	Litre	mm	mm	mm	Kg
A0027523	2	278	420	142	2.5
A0027524	3	285	420	135	3.3
A0027525	6	386	605	219	6.8

ITA Engine Stands



A0027539

System Code	Max. Load	Base Length	Weight
	Kg	mm	Kg
A0027538	340	875	18.5
A0027539	450	880	21

ITA Heavy-Duty Industrial Shot Blasters

Perforated steel floor with a partial separating screen (foot pedal operated).



A0027514

Stock Code	Height	Width	Depth	Weight
	mm	mm	mm	Kg
A0027514	176	132	120	160

ITA Bench Top Shot Blasters



A0027485

System Code	Overall Dimensions			Working Space			Weight
	Length	Width	Height	Length	Width	Height	Kg
	mm	mm	mm	mm	mm	mm	
A0027485	630	530	480	560	460	280	18

ITA Floor Standing Shot Blasters



A0027493

System Code	Height	Width	Depth	Weight
	mm	mm	mm	Kg
A0027493	960	600	610	48

ITA Parts Washer



A0027489

System Code	Capacity	Height	Length	Depth	Weight
	Litre	mm	mm	mm	Kg
A0027489	15	470	360	250	6.5
A0027488	90	790	550	320	25

ITA Hand Oil Pumps

Bi-Directional - can either suck or pump & is self priming.



A0007968

System Code	Sucking Speed	Handle Speed RPM	Output Connections
A0007968	13L/80 Revs	23	3/4 NPT

ITA Large Capacity Part Washers

Single piece tank construction with a fully sealed magnetic drive pump.



A0027486

System Code	Capacity	Height	Length	Depth	Weight
	Litre	mm	mm	mm	Kg
A0027486	150	890	1130	54	42

ITA Oil Drainers

With Air Pressure Valve & Fluid Lever Guage.



B0001429

System Code	Capacity	Min. Height	Max. Length	Depth	Weight
	Litre	mm	mm	mm	Kg
B0001429	68	124	290	640	21

ITA Multi-Purpose Oil Drainers

Drains, collets & fills. Compressed air creates a vacume which sucks oil out. Adjustable oil tray.



B0001430

System Code	Tank Capacity	Sucking Speed	Collecting Height	Draining Pressure	Weight
	Litre	L/min	mm	mm	Kg
B0001430	65	0.6-1.6	1.85	0.5	32

ITA Workshop Presses (5 Ton)



B0001434

System Code	Max. Load	Max. Height	Max. Width	Weight
	ton	mm	mm	Kg
B0001434	5	1760	515	42.5

ITA Workshop Presses (10 Ton)

With Pressure Guage.



B0001435

System Code	Max. Load	Stroke	Work Range	Max. Height	Max. Width	Weight
	Ton	mm	mm	mm	mm	Kg
B0001435	10	180	160-330	700	520	46

ITA Workshop Presses (12 Ton)



B0001432

System Code	Max. Load	Max. Height	Max. Width	Weight
	Ton	mm	mm	Kg
B0001432	12	1230	490	43

ITA Workshop Presses (20 Ton)



B0001433

System Code	Max. Load	Stroke	Work Range	Bed Width	Weight
	Ton	mm	mm	mm	Kg
B0001433	20	160	0-998	750	129